

ECP48CX-5

Five-section RZ-FOLD



ECP48CX-5

Five-section RZ-FOLD

TOTAL WEIGHT= 77,080 lbs (34,963kg)



Based on Model MACK GU714 with 2116 pump cell. Dimensions will vary with different truck makes, models and specifications. Weights are approximate and include pump, boom, truck, driver and some fuel. Varies with options selected.

BOOM SPECIFICATION

| | |
|-----------------------|---------------------------------------|
| Folding type | 5-section RZ-folding |
| Max. vertical reach | 154'6" (47.1m) |
| Max. horizontal reach | 138'1" (42.1m) |
| Max. depth reach | 108'7" (33.1m) (incl. End hose 3m) |
| Unfolding height | 39'4" (12m) |
| Slewing angle | 360deg. |
| End hose length | 10' (3m) |
| Delivery pipe dia. | 5" (125mm) |

PUMP SPECIFICATION

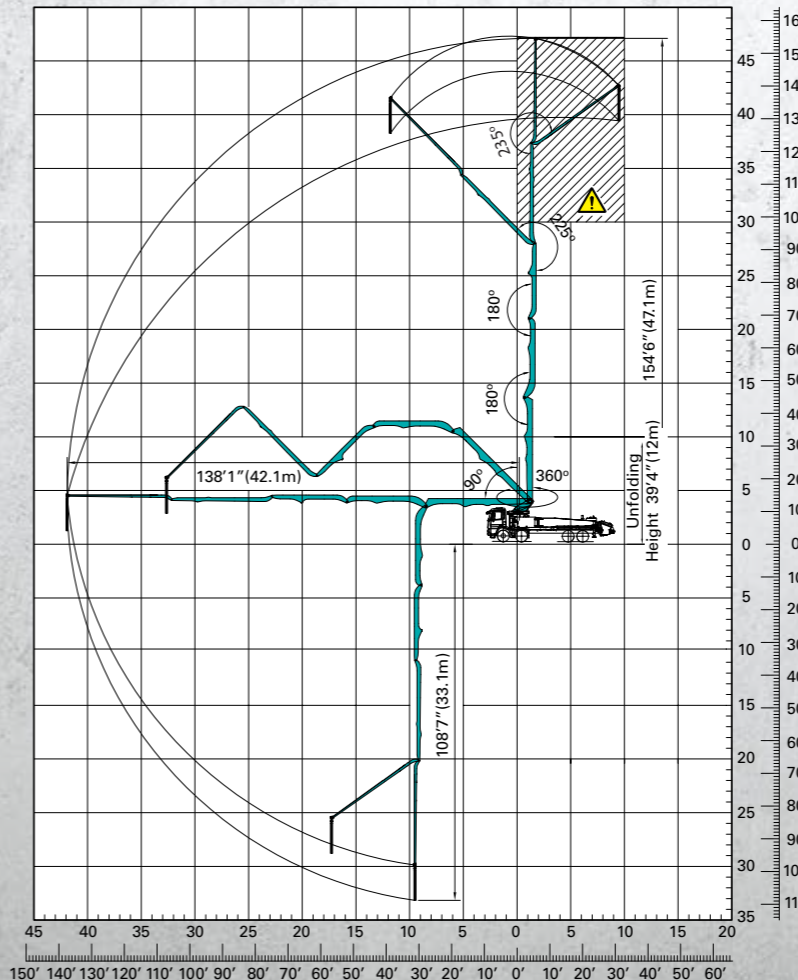
| | |
|-----------------------|---|
| Pump cell | 2116 |
| Control system | Closed Free Flow Hydraulic |
| Main pump | A4VG125x2 |
| Concrete cylinder | 9"x83" (230x2,100mm) |
| Strokes No.(per min.) | 30 |
| Concrete output* | 210yd ³ /hr (160m ³ /h) |
| Concrete pressure* | 1,233psi (85bar) |
| Transfer tube type | S-Tube,S2318 (Dia. 230-180mm) |
| Volume of hopper | 158gal (600L) |

*Rod side. Ouput & pressure are theoretical data.

FEATURE

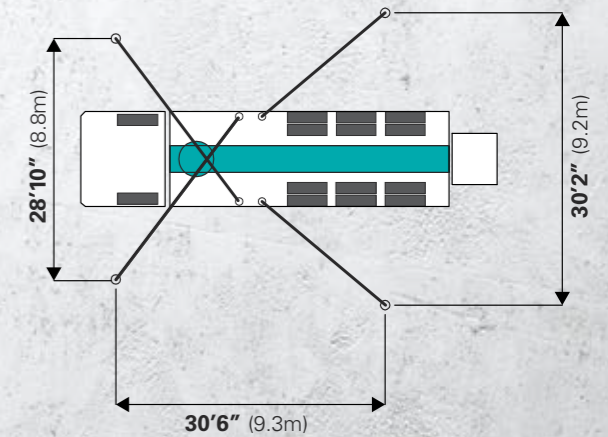
| | | |
|---|--|--|
| Inductive proximity switch with indicator | Flushing water pump(30bar) | Twin wall pipe |
| Single lip concrete piston | Auto lubrication system for hopper | Working light on boom |
| Hard-chromed concrete cylinders | Tungsten carbide for wear ring and plate | Safety(OSS) system |
| Greasing port on boom link and pedestal | Flap elbow(180-150mm) with cleaning port | Safety device for hopper |
| Working light on pedestal | Agitator motors on both side hopper | Auxiliary fuel tank on one side rear outrigger |
| Aluminum platform(non-skid) | Working light on hopper | |

WORKING RANGE



⚠ Don't use in caution area

OUTRIGGER SPREAD



Front outrigger type X(Diagonal) Extension
Rear outrigger type Swing-out



EVERDIGM HEAD OFFICE

49, Buyeong-gil, Jincheon-eup, Jincheon-gun, Chungcheongbuk-do, Korea
Tel +82-43-530-3300 Fax +82-43-530-3429

EVERDIGM AMERICA

655 West Lytell Street, Metter, Georgia 30439, USA
E-mail: everdigmamerica@everdigm.com
Tel +1-912-685-5099

*EVERDIGM reserves the right to make changes to specifications and supply scope. Specifications and supply scope are subject to change without prior notice.