

The SANY logo is displayed in white, bold, uppercase letters within a red rectangular box in the top right corner of the page.

SANY

The model number SY68 is written in large, bold, red uppercase letters with a slight drop shadow, positioned in the upper left quadrant of the page.

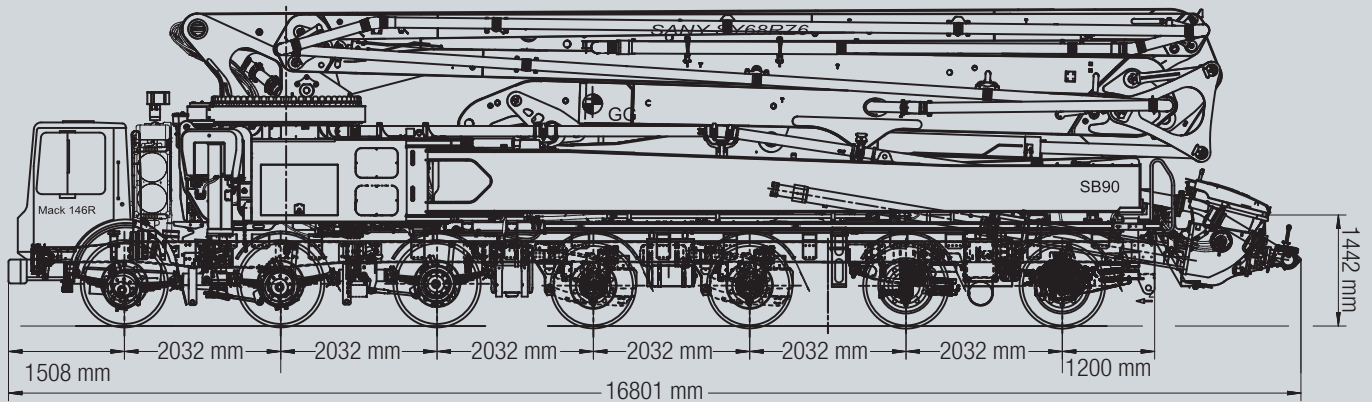
SY68

The main product name is written in large, bold, white uppercase letters with a drop shadow, centered in the middle of the page. The background of the entire page is a grayscale photograph of a truck-mounted concrete pump boom extending over a mountainous landscape.

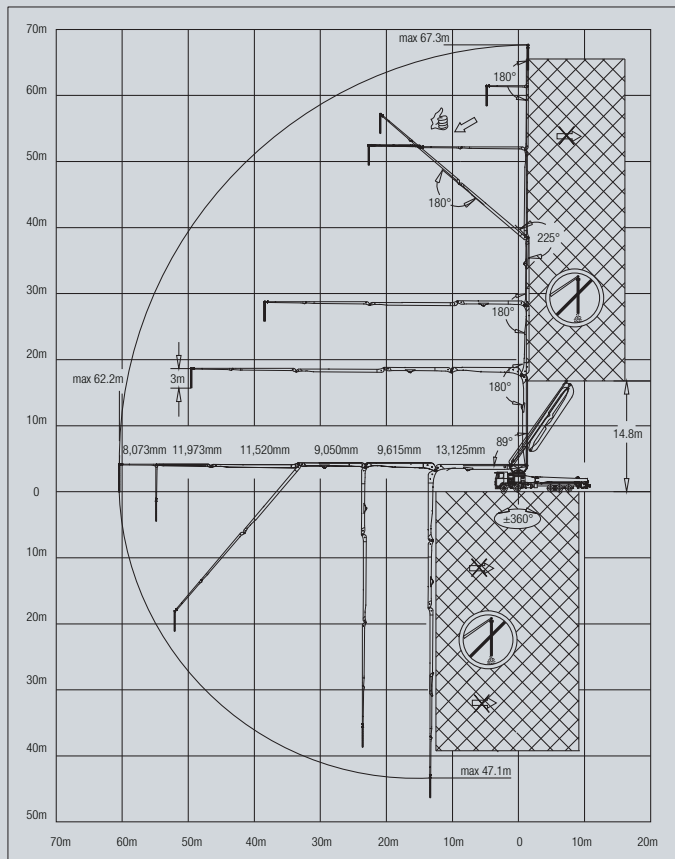
**TRUCK-MOUNTED
CONCRETE PUMP**

The text '2022 PRODUCT SPECIFICATIONS' is written in white, bold, uppercase letters on a dark gray horizontal band at the bottom of the page.

2022 PRODUCT SPECIFICATIONS



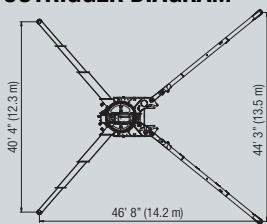
SY68 RANGE DIAGRAM



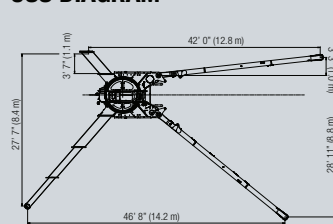
SY68

Machine	
Length	55' 1" (16.8 m)
Width	8' 5" (2.6 m)
Height	13' 4" (4.1 m)
Weight	129,458 lbs (58,722 kg)
Boom	
Boom Folding Pattern	RZ
Boom Rotation	± 360
Boom Arms	6
Vertical Reach	220' 10" (67.3 m)
Horizontal Reach	204' 1" (62.2 m)
Unfolding Height	48' 7" (14.8 m)
Outrigger	
Type of Outriggers	X Extension / Swing out
Front Outrigger Spread	40' 4" (12.3 m)
Rear Outrigger Spread	44' 3" (13.5 m)
One Side Support (OSS)	Yes
Pump	
SANY PCU model	SY-200
Main Oil Pump	Rexroth
Hydraulic System Configuration	Open
Hydraulic System Pressure	4641 psi (320 bar)
Output - Rod Side	260 yd ³ /hr (200 m ³ /hr)
Output - Piston Side	180 yd ³ /hr (137 m ³ /hr)
Pressure - Rod Side	1201 psi (83 bar)
Pressure - Piston Side	1757 psi (120 bar)
Strokes Per Minute - Rod Side	33
Strokes Per Minute - Piston Side	23
Material Cylinder Diameter	10.2"
Stroke Length	74.8"
Hopper	
BC38C10AM	
Height	55"
Capacity	159 gal

OUTRIGGER DIAGRAM



OSS DIAGRAM



† Technical data is based on Mack Terrapro chassis selection